

# Transform your products into services. Manage them from the CLOUD and create your IoT solutions with **CommonSense** . IoT Platform



**An Application Enablement Platform** to connect and supervise your equipment through a large variety of IoT telecom networks.



**Standard and open tools** immediately available for the development of your IoT solutions with ease

Lua scripting, REST & MQTT APIs



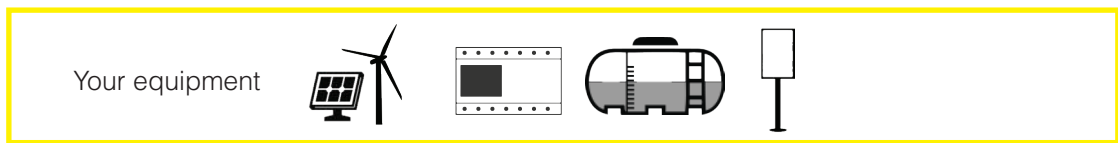
**Benefit from suitable business models:** white label, CLOUD or On-Premises are available as well as pay-as-you-grow.



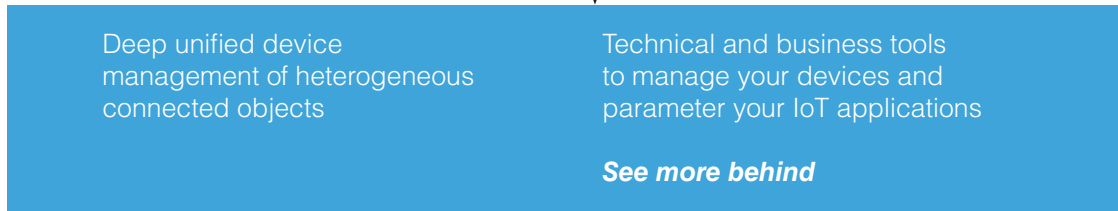
**Efficient and scalable platform** Secured with high scalability (carrier-grade logic).



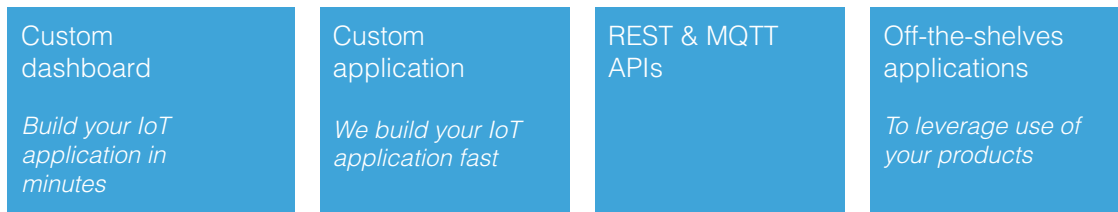
**CONNECT heterogeneous devices through**



**MANAGE - IoT device management platform**



**DESIGN - Application & APIs**



External information systems & applications, ERPs...

# A broad range of features spanning the entire lifecycle of your equipment

## Usage

Users can connect, supervise and control their devices remotely

## Design

You get insights about how your products are used



## Maintenance

Users benefit from tools to prevent failures and act remotely

### Bring multi-connectivity services to your devices

Connect your LPWA devices with LUA scripting incl. payload translation.



```

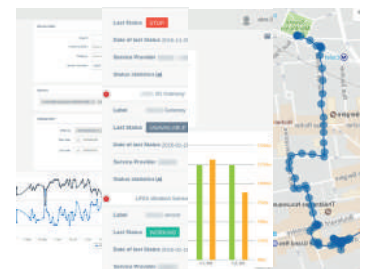
2 local payload = getInputPayload();
3 local prefix = string.sub(payload,1,2);
4
5
6 -- status record
7 local status = stringHex2bin(string.sub(payload,3,8));
8 print("Status: " .. status);
9 local batteryStatus = string.sub(payload,9,10);
10 setOutputRecordData(114, batteryStatus);
11
12 if prefix == "01" or prefix == "02" or prefix == "03" then
13     -- temperature record
14     local bin = stringHex2bin(string.sub(payload,11,16));
15     -- little indian to big indian
16     local tempHexa = string.sub(bin,7,16);
17     local tempRaw = tonumber(tempHexa,16);
18     if string.sub(bin,1,1) == '1' then
19         -- negative temperature
20         temp = - (65536 - tempRaw) / 10.0;
21     else
22         temp = tempRaw / 10.0;
23     end
24     -- output temperature
25 
```

### Authentication and access rights management

User profiles can be customized to define their access rights to equipment.

### Equipment monitoring

- Data
- Status
- Payload timeline
- Tracking



### Alerts - Condition-based management

Setting of trigger thresholds, technical alarms, geofencing with web notifications, email or SMS.



Parameter	Actions	Alerts
DVED	EMAIL	ESBN
dry	EMAIL	ESBN
0 Dry contact	EMAIL	ESBN
1 Dry contact	EMAIL	ESBN
0 Court 1 Contact	EMAIL SMS	ESBN ESE
1 Court 1 Contact	EMAIL SMS	ESBN ESE
0 Court 2 Contact	EMAIL SMS	ESBN ESE
1 Court 2 Contact	EMAIL SMS	ESBN ESE

### Virtual measures

Perform advanced calculus & data processing.



### Process automation

Give your clients the possibility to create automation scenarios related to their equipment.

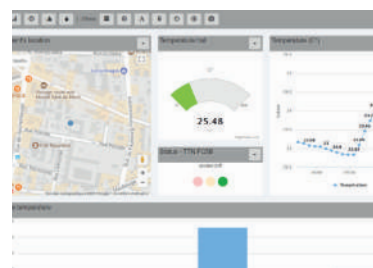
### Full control-command of equipment stocks

Permanent access to equipment. Examples: - Updates - Check-ups - Commands

Commands	
SetOutput	Output1 OFF
SetOutput	Output2 OFF
GetInfo	Send
GetInfo	Send
GetInfo	Send

### Design your IoT applications

Custom dashboard without coding / Custom application / APIs / Off-the-shelves-applications.



And much more...

We are experts in IoT/M2M with **9 years of experience**. Beyond, we have been running, operating and managing Cloud, telecom and IT infrastructures **for about 15 years**.



France-Switzerland



France



Germany



Italy



France

67, rue de Dunkerque  
F-75009 Paris  
Tel. : +33 (0)1 43 15 69 85



[www.vertical-m2m.com/equipment-manufacturer](http://www.vertical-m2m.com/equipment-manufacturer)